

The Staff

Principal of Adaptive Programs	Allison Witkin
Special Education Teacher	Orvin Breningstall, Ph.D.
Special Education Teacher	Cassie Lacher
Vocational Education Teacher	Stacia Brundage
Vocational Education Teacher	Dan McPherson
Psychologist	Brandon Johnson, Ed.S.
Administrative Secretary	Paola Fredericks

The process of becoming a student at the Ranch begins at Grandview High School (GHS) Student Achievement Services or Cherokee Trail High School (CTHS) Pupil Services.

All students interested in attending the Ranch need to take part in an Individual Educational Plan (IEP) meeting before entering the program.

Please call GHS Student Achievement Services or CTHS Pupil Services for more information.

Contact Information

GHS Student Achievement Services	720-886-6671
CTHS Pupil Services	720-886-1970
Allison Witkin—Principal Joliet Learning Center	720-747-2902
Main Office at the Ranch	720-886-6880
Dr. Orvin Breningstall	720-886-6882
Cassie Lacher	720-886-6883
Stacia Brundage	720-886-6887
Dan McPherson	720-886-6892
Brandon Johnson	720-886-6889

Cherry Creek School District

I-Team Ranch

Grandview High School  
Cherokee Trail High School



7250 South Gartrell Road  
Aurora, CO 80016  
Phone: 720-886-6880  
Fax: 720-886-6888

2010-2011 School Year

Dedicated to Excellence

The I-Team Ranch is a Special Education Option Program of Grandview and Cherokee Trail High Schools. We help juniors and seniors to learn, achieve, and graduate from high school in order to be able to enter the work force, to enroll in college, or to attend vocational programs. The Ranch has been helping students succeed since the year 2000.

## Classes and Content

### ACADEMIC

Literature and Literacy  
 Research and Essay Writing  
 Writing Review and Improvement  
 Geography  
 Civil Rights in the USA  
 Current US and World Issues  
 Genetics/Disease and Wellness  
 Geometry, Algebra, and Statistics  
 Probability/Basic Math Review

### VOCATIONAL

Job Seeking  
 Adult Decision Making  
 Transitions  
 Accounting  
 Independent Living Skills  
 Economics of the Workplace  
 Choices  
 Career Awareness  
 Workplace Math

### ELECTIVE CLASSES

Rock Climbing	Computer Apps	Peer Mediation	Robotics
Bowling	Cultural Awareness	Fitness	Spanish
Nutrition	Arts and Crafts	Poetry	Mentoring

### SOCIAL AND EMOTIONAL LEARNING

The Ranch program concentrates on student Social and Emotional Learning. Our teachers take time to teach students to manage their emotions, care about one another, and cooperate with others. This focus helps students succeed in school, at home, at work, and in life. Mental health professionals are available several days a week, and students are encouraged to be a part of counseling groups available at school.

## Educational Opportunities

### Academic Program

- Small Class Sizes to increase individual attention
- Project-Based Learning
- Structured School Day with strict discipline rules—No cell phones, closed campus, attendance requirements, and strong behavioral and academic expectations
- Flexible Scheduling
- Opportunities for Extra Credit/Independent Study
- Preparation for Community College and Beyond
- Help with Filling in Academic Gaps

### Vocational Program

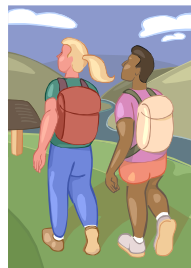
- Vocational Classes
- Help with Hourly Jobs and Work/Study Credit
- Internships/Apprenticeships
- Volunteer Activities
- Job-Shadowing Opportunities
- Placement in Vocational Programs or Community Colleges

## Expeditionary Learning

- Rock Climbing/Hiking
- Community College Visits
- Community Service Projects
- Diversity Conference
- ACE Challenge
- HawkQuest Field Experiences



- Denver-Area Museums
- The Denver Zoo
- The Denver Library
- The Denver Botanic Gardens



## Ranch Schedule

	Monday	Tuesday	Wednesday	Thursday	Friday
8:00-8:55	Elective Class		Elective Class	Elective Class	Elective Class
9:15-10:10	Core Class	Activity Day	Core Class	Core Class	Core Class
10:10-11:05	Core Class	Community Classes	Core Class	Core Class	Core Class
11:30-12:25	Core Class	8:00-1:00	Core Class	Core Class	Core Class
12:25-1:20	Elective Class		Elective Class	Elective Class	Elective Class