

# *Cherry Creek* PLANNING FORWARD

---

School Restart Planning:  
Health Guidance &  
Planning Update

---

Community Update  
July 29, 2020

Maintaining *the*  
Tradition *of*  
Excellence



Cherry Creek **Future Forward** 

# School Restart - Overview

1. Health Guidance and School Opening, CDE / CDPHE
2. MDPH School Restart Guidance Comparison to Colorado Phases for Reopening
3. Cherry Creek - Local Decision-Making Metrics for In-Person vs Remote Learning
4. Cherry Creek Schools Multiple Overlapping Safety Strategies
5. Specific Planning by School Level
6. Remote Learning Plan
7. Special Populations
8. CCSD Alignment with Health Guidance & CEA Expectations
9. Conclusions
10. Recommendation for school

# School Restart – Public Discussions & Updates

## Board of Education Public Discussions

May 1, 11, 22, 29  
June 5, 12, 19, 26, 29  
July 10, 17, 20, 24, 27

## All Staff Meetings

June 5, 29  
July 17, 29

## All Administrators Meetings

May 5  
June 26,  
July 15, 22, 28

## Additional Presentations

Parents' Council  
PIN  
CCSF  
GT

## District Accountability

May 5  
June 17  
July 16

## District SEAC

May 4  
June 21

## District PASS

May 4  
June 10  
July 22

## Arap. County Calls

June 4  
July 16

## Student Advisory Board

May 15  
June 3, 9, 22  
July 9

## Union Discussions

May 8  
June 2, 10,  
12, 17  
July 9, 15,  
17, 22



# School Restart – Task Force

## Planning Forward Task Force Meetings

April 29

May 5, 7, 12, 14, 20, 22, 28

June 1, 4, 9, 16, 23, 25

July 15, 20, 23,

## Planning Forward Task Force:

Teachers, Classified Staff, Administrators, Parents, Students, Experts

Amid the spring 2020 COVID-19 Pandemic and unprecedented in-person school closure, the Cherry Creek School District has created a task force charged with developing multiple alternative recommendations for the operation of schools for the 2020-2021 school year. Our greatest hope is that schools could resume as normal starting this coming fall, but believe we have the responsibility to proactively plan for the varying and unknown impact of the virus for the foreseeable future.

We represent 55,000 students and more than 9,000 staff, in addition, their families, and take our responsibility seriously to develop plans to effectively protect their health and safety while fulfilling our mission to provide exemplary educational opportunities.

# *Cherry Creek* PLANNING FORWARD

---

Health Guidance

---

Maintaining *the*  
Tradition *of*  
Excellence



# School Restart – Health Guidance & School Opening

1.  
Health Guidance and School Opening  
Colorado Department of Public Health & Environment  
Colorado Department of Education

*Released to Superintendents 7/21/2020*

<https://drive.google.com/file/d/1ngmiJ4SWVDG7JunCTsBh3X246mz9Vsm9/view>





## REOPENING SCHOOLS

# HEALTH GUIDANCE BY COVID-19 PHASE



### STAY AT HOME

Wide scale closures, except for critical functions, to reduce hospitalizations and deaths

Gatherings prohibited



### SAFER AT HOME

Partial reopening, around 25%-50% with capacity caps, to give public health and health care systems ability to scale their testing, tracing and treatment capabilities.

Small gatherings are okay, but large gatherings are prohibited.



### PROTECT OUR NEIGHBORS

Expanded reopening, around 50% without caps, as local outbreaks are managed by strong local systems.

Larger gatherings are okay, but mass gatherings are prohibited until there is a treatment or vaccine.



# State of Colorado

Health Guidance  
Phases of Reopening



**STAY AT  
HOME**



**SAFER AT  
HOME**



**PROTECT OUR  
NEIGHBORS**

What School looks like

Full  
Remote

In-Person with  
multiple overlapping  
safety strategies (with  
the possibility of  
periods of remote  
learning)

Full In-Person

Arapahoe County  
7/29/2020



**COLORADO**  
Department of Public  
Health & Environment  
Department of Education

July 20<sub>8</sub> 2020





## SAFER AT HOME

In-Person with  
multiple overlapping  
safety strategies with  
the possibility of  
periods of remote  
learning

Arapahoe County  
7/29/2020

*Specific guidance  
from CDPHE / CDE  
for reopening school  
In Safer at Home*



**COLORADO**

Department of Public  
Health & Environment

Department of Education

July 20<sup>9</sup>, 2020

# GUIDANCE RATIONALE

- Global COVID-19 evidence suggests that younger children play a smaller role in onward transmission of COVID-19<sup>1</sup>. The risk of transmission between young children and from young children to adults is lower, than the risk of transmission to adults between or from older children and adults. The risk to children is likely lower than that of yearly influenza, accounting for both primary disease and Multisystem Inflammatory Disease in Children (MIS-C). This is why kindergarten and elementary schools should have different guidelines than secondary schools.
- The risk of transmission between children and from children to adults is low, and the risk of transmission to adults is greater from other adults with either symptomatic or asymptomatic infection. Therefore, the most important limit to classroom size for adults is the number of adults required to be in close proximity.
- Given the limited role young children likely play in transmission, there likely is minimal benefit relative to the great difficulty of physical distancing young children within a class to prevent COVID-19 spread. ([American Academy of Pediatrics](#)) Moreover, physical distancing has the potential to negatively impact appropriate child development in this age group. Therefore, focus should be placed on other risk mitigation strategies that better complement the learning and socialization goals of children up through 5th grade. In secondary schools there is likely a greater impact of physical distancing on risk reduction of COVID-19.



**COLORADO**

Department of Public  
Health & Environment

Department of Education

July 20, 2020

# GUIDANCE RATIONALE

- Cohorting significantly reduces the number of students and staff who will need to be excluded in the event of a case of COVID-19 in a school by limiting the number of close contacts of each individual (all of whom will need to be quarantined up to 14 days if they have close contact with a case). Considerations about the number of close contacts should be included in decisions about transportation and activities as well.
- For COVID-19, a close contact is defined as any individual who was within 6 feet of an infected person for at least 15 minutes, starting from 2 days before illness onset (or, for asymptomatic patients, 2 days prior to positive specimen collection) until the time the patient is isolated. However, members of the same classroom cohort may be considered “close contacts,” even if desk spacing is greater than 6-foot.
- Protection efforts applied collectively (for example social distancing AND masking AND cohorting) will provide stronger protection than any one effort in isolation as it will reduce the transmission of disease and minimize the disruption to in-person learning.



**COLORADO**

Department of Public  
Health & Environment

Department of Education

July 20, 2020

# GUIDANCE REGARDLESS OF PHASE

## School Environment and/or Activities

---

### Physical Distance

(applies more strongly to middle and high school settings):

- 6-foot between-student spacing reduces disease transmission risk and should be preferred; 3-foot distancing still provides substantial benefits and is acceptable in the context of a comprehensive disease control strategy.
- Teachers and other adult staff should make the greatest effort to adhere to 6-foot distancing, as their risk and disease transmission potential is higher than students.
- Create a seating chart and maintain children in assigned seats throughout the day as possible.
- Consider staggered arrival and pickup times to reduce crowding in entrances and hallways.

### Class and Cohort Size:

- Class sizes and cohorting guidance will vary with phase and grade level (see below).
- Cohorts are encouraged to reduce contact with others.
- Cohorts reduce the number of exposed students/staff from a confirmed COVID-19 case and will result in fewer students/staff required to quarantine.
- Special service providers need not be included in the teacher-to-classroom ratios. These providers should minimize contact with non-client students and other adults in classrooms.



**COLORADO**

Department of Public  
Health & Environment

Department of Education

July 20<sub>12</sub>, 2020

#### K - 5th

- Continue remote instruction if best for your community or;
- Up to four adults per classroom per day. So, only 4 teachers should rotate into one specific classroom per day.
- Students in grades K-5 do not need to meet the 6-foot distance in classrooms or other locations.
- Normal class sizes may occur.

#### 6th - 8th

- Continue remote instruction if best for your community or;
- Up to three adults per classroom per day. So, only 3 teachers should rotate into one specific classroom per day.
- A firm student gathering number is not given because school classroom sizes differ between and among districts. Local schools should determine the appropriate gathering size while working towards 6-foot distance in a classroom. It is understood some adjustments for each school will need to occur.

#### 9th - 12th

- Continue remote instruction if best for your community or;
- A firm student gathering number is not given because school classroom sizes differ between and among districts. Schools should determine the appropriate gathering size while working towards 6-foot distance in a classroom. It is understood some adjustments for each school will need to occur.

#### Staff-Only Activities

- Remote or outdoors if possible; groups of 10 or fewer if physical attendance is required.

*Specific guidance  
by School Level  
from CDE / CDPHE*



**COLORADO**

Department of Public  
Health & Environment

Department of Education

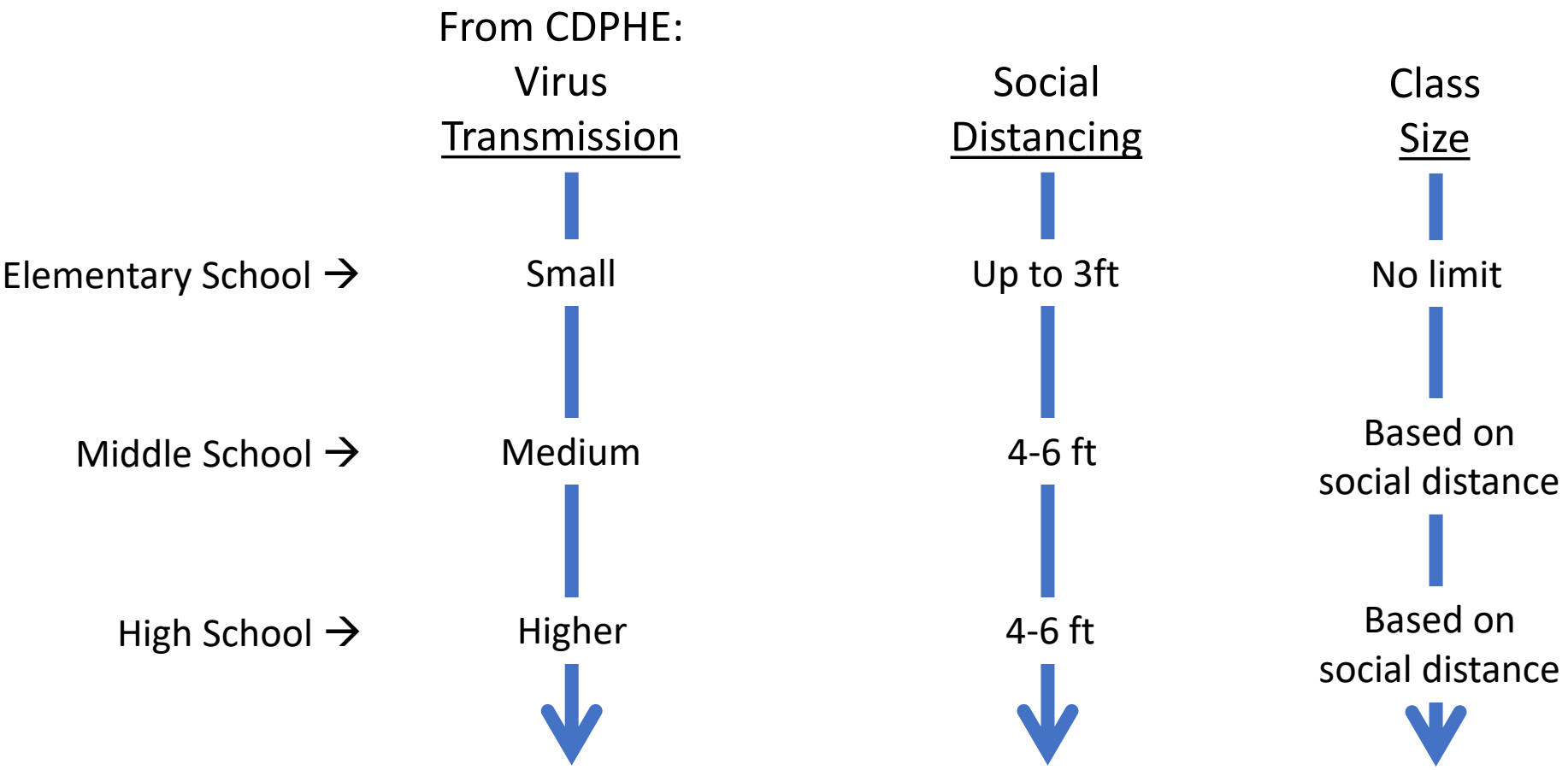
July 20, 2020

# Review of Guidance from CDPHE

*There are always exceptions*

Specific examples from the multiple overlapping safety strategies approach

The combination of all strategies make the environment safe for staff & students



## 2. Metro Denver Partnership for Health (MDPH) School Restart Guidance Comparison to CDPHE / CDE Guidance





**Masks and Other Protective Equipment**



**Cohort Grouping**



**Physical Distancing**



**Hand washing and Sanitizing**



**Temperature and Symptom Screening**



**Building Entry/Exit**



**Ventilation**



**Cleaning Procedures**



**Testing**

# COVID-19 Strategies for Schools

Recommendations from the  
Metro Denver Partnership for Health

Continued school closures threaten the health and safety of Colorado children. In addition to learning losses, children face increased risks of food insecurity, potential abuse, poor mental health and social-emotional wellness, and lack of physical activity. And these harms fall hardest on children from lower income families.<sup>1</sup>



**DENVER HEALTH™**  
est. 1860  
FOR LIFE'S JOURNEY

<https://www.coloradohealthinstitute.org/news/new-public-health-report-provides-guidance-safely-reopening-metro-denver-schools>



	<b>Masks and Other Protective Equipment</b>
	<b>Cohort Grouping</b>
	<b>Physical Distancing</b>
	<b>Hand washing and Sanitizing</b>
	<b>Temperature and Symptom Screening</b>
	<b>Building Entry/Exit</b>
	<b>Ventilation</b>
	<b>Cleaning Procedures</b>
	<b>Testing</b>

## MDPH

Required K-12

Yes

Greater by age

Yes

Yes

Stagger / space

Increase fresh air

Between cohorts

Process available

## CDPHE/CDE

Required 6-12, Optional K-5

Yes

Greater by age

Yes

Yes

Stagger / space

Increase fresh air

Between cohorts

Process available

# *Cherry Creek* PLANNING FORWARD

---

School Restart Plan Update

---

Community Update  
July 27, 2020

Maintaining *the*  
Tradition *of*  
Excellence



Cherry Creek **Future Forward** 

## 3. Local Decision-Making Metrics

CDE / CDPHE:

“Continue remote instruction if best for your community or;”

## 3. Local Decision-Making Metrics

Our decision must be made based on science & facts

Not  
Politics  
Pressure  
Popularity  
Perception  
or, because others did it...

# School Restart – Decision Making Metrics – Research Base

## Information utilized to create CCSD safe school metrics

<https://covid19.colorado.gov/safer-at-home-in-the-vast-great-outdoors/guidance-for-everyone/local-orders-variances>

[https://drive.google.com/file/d/1CfmeRe3-WG1j\\_e9wBwOMl2eIITPXAjlv/view](https://drive.google.com/file/d/1CfmeRe3-WG1j_e9wBwOMl2eIITPXAjlv/view)

<https://covid19.colorado.gov/data/case-data>

<https://drive.google.com/file/d/1ngmiJ4SWVDG7JunCTsBh3X246mz9Vsm9/view>

<https://www.tchd.org/823/Case-Updates>

<https://data.tchd.org/covid19/testing/arapahoe/>

<https://www.cdc.gov/coronavirus/2019-ncov/community/schools-childcare/prepare-safe-return.html#prepare>

<https://www.coloradohealthinstitute.org/news/new-public-health-report-provides-guidance-safely-reopening-metro-denver-schools>

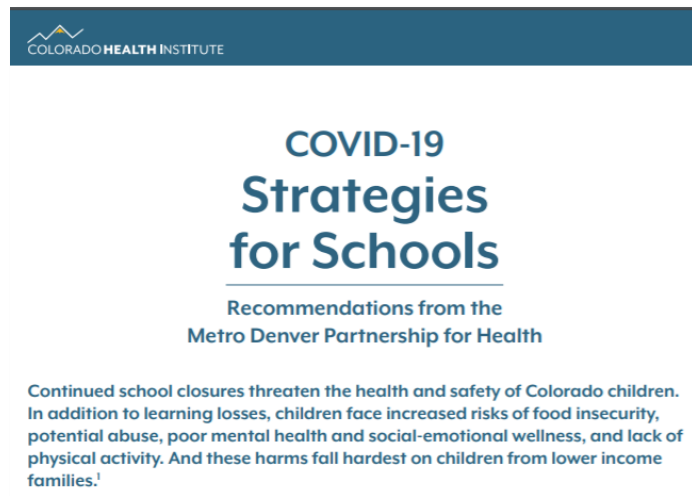
<https://services.aap.org/en/pages/2019-novel-coronavirus-covid-19-infections/clinical-guidance/covid-19-planning-considerations-return-to-in-person-education-in-schools/>

# School Restart – Decision Making Metrics

## Cherry Creek safe school metrics



Dr. Douglas  
Executive Director  
Tri-County Health Department



“The CCSD re-opening plan represents a thoughtful approach to decision-making, with a solid foundation in the best available science, alignment with public health guidance, and provision of a clear and well-thought out plan to start the new school year and adjust course on an as-needed basis as the year progresses.”

# School Restart – Decision Making Metrics



PROTECT OUR  
NEIGHBORS

## » QUALIFICATIONS »

Transmission (Metrics 3 & 4)	
Stable or declining COVID-19 hospitalizations	Stable (no greater than 25% increase) or declining counts of new confirmed COVID-19 hospitalizations in the county's referral hospitals (LPHA defines) in the last 14 days compared to previous 14 day period OR no more than two new hospital admissions of county residents with confirmed COVID-19 on a single day in the last 14 days.
Fewer new cases	<p>25 or fewer new cases/100,000 people in the past two weeks (two-week cumulative incidence), <b>excluding</b> cases among residents of congregate facilities (senior care, other residential care, youth corrections, corrections) experiencing outbreaks.</p> <p>OR</p> <p>For a county/jurisdiction with a population of less than 30,000, no more than 7 cases, excluding cases among residents of congregate facilities (senior care, other residential care, youth corrections, corrections) experiencing outbreaks, in a two-week period.</p> <p>OR</p> <p>Two-week average molecular test positivity rate of less than 5% AND county is meeting minimum testing rate (0.75 per 1,000 population) AND two-week cumulative incidence is no greater than 50 cases/100,000 people in the past two weeks.</p>

Data to answer these questions  
Is available from Tri-County Health

<https://www.tchd.org/823/Case-Updates>

<https://data.tchd.org/covid19/testing/arapahoe/>

[https://drive.google.com/file/d/1CfmeRe3-WG1j\\_e9wBwOMl2eIIlTPXAJlv/view](https://drive.google.com/file/d/1CfmeRe3-WG1j_e9wBwOMl2eIIlTPXAJlv/view)

# School Restart – Cherry Creek

CDE / CDPHE:

- Continue remote instruction if best for your community or;

Four (4) areas of specific Arapahoe County data to guide our decision

**<4 Sustained (7-14 days)**

Remote

**=>4 Sustained (7-14 days)**

In-person

2

GOOD - Data demonstrates the virus is under control

1

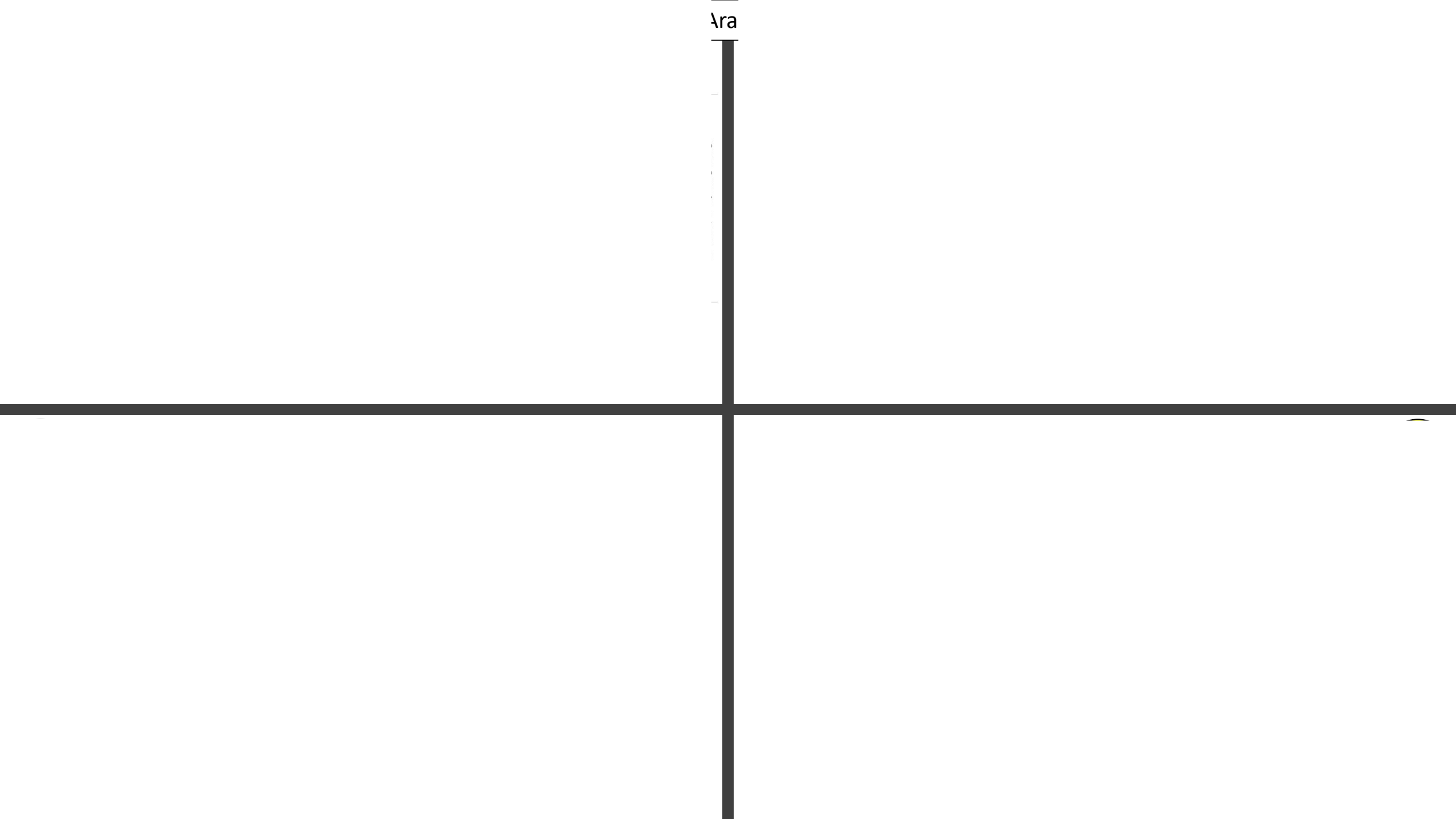
CAUTION - Data demonstrates there is a concerning trend,  
monitor closely and be prepared to react

0

POOR - Data demonstrates significant community spread, uncontrolled



Ara

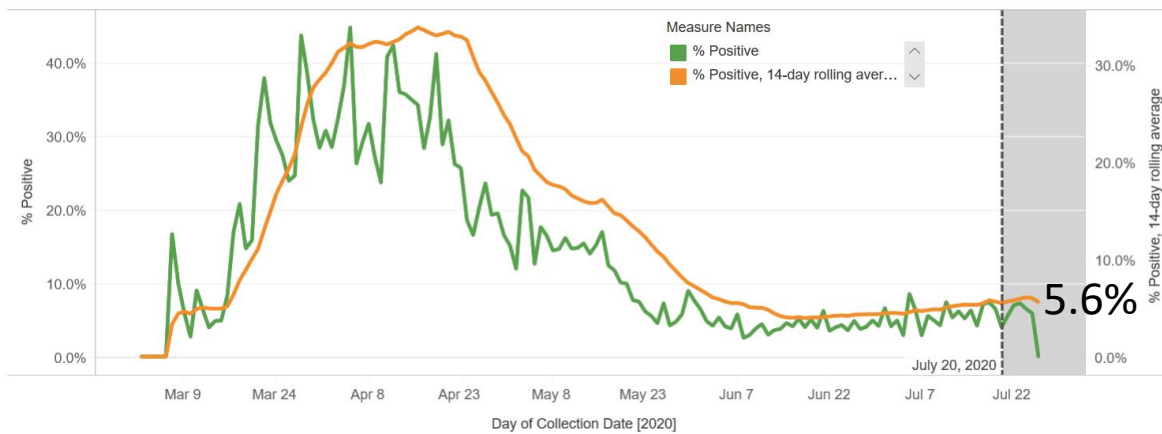


1

## Percent Positive Tests: Daily and 14-Day Rolling Average

In Arapahoe County

\*Last 7 Days: Data may be incomplete due to processing delays



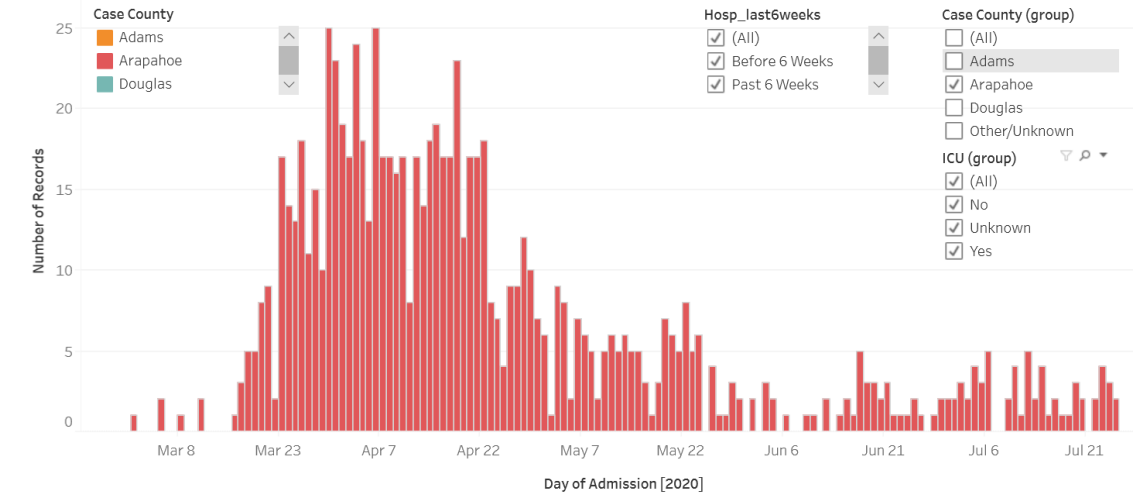
0-5.0

5.1-9.9

10.0 +

4

## Daily Hospitalizations by County (Date of Admittance)



Stable

Sustained Increase

Uncontrolled

0

1

## 14-Day Incidence Rates (per 100,000), Past 14 Days, *Excluding Cases Residing in Congregate Facilities*

Adams, Arapahoe and Douglas Counties

\*Congregate facilities include: correction facilities, long-term care and skilled nursing facilities, treatment centers and rehab facilities

Adams 14-day No outbreak

168.7

Arapahoe 14-day No outbreak

146.3

Douglas 14-day No outbreak

104.1

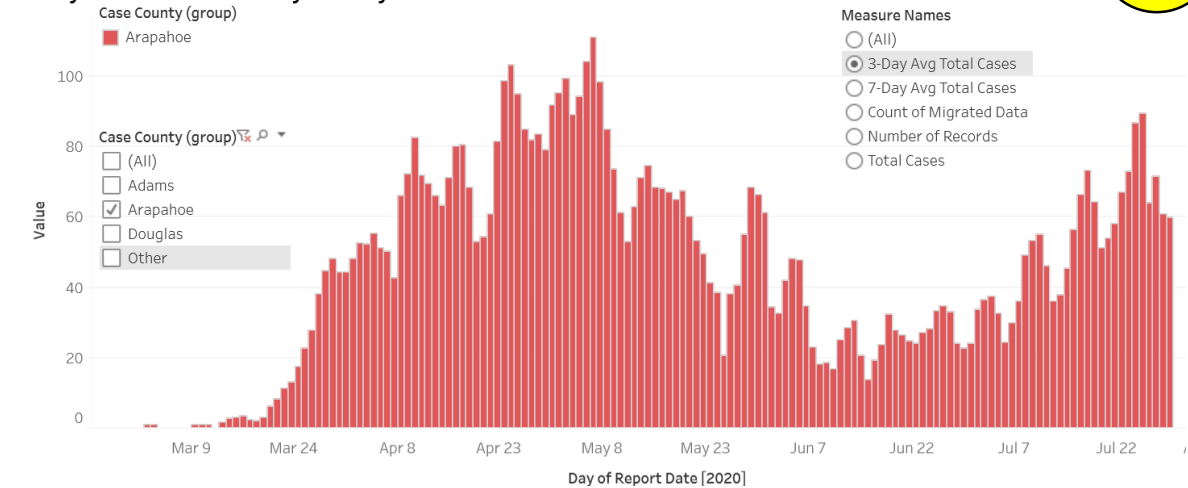
&lt;50

50-100

&gt;100

**\*\*Metrics may be updated based on new guidance\*\***

## Daily COVID-19 Cases by County



Stable

Sustained Increase

Uncontrolled

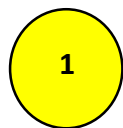
# School Restart – Cherry Creek

## Specific Arapahoe County data to guide our decision

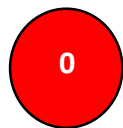
<u>7/29/2020 Example</u>	Positivity Rate	=	1
	Hospitalizations	=	2
	Cases per 100,000	=	0
	Cases	=	1
<hr/>			
	TOTAL	=	4



GOOD - Data demonstrates the virus is under control, move forward



CAUTION - Data demonstrates there is a concerning trend, monitor closely and be prepared to react



POOR - Data demonstrates significant community spread, uncontrolled do not move forward until trend is downgraded

**<4 Sustained (7-14 days)**

Remote

**=>4 Sustained (7-14 days)**

In-person

# School Restart – Cherry Creek

## Specific Arapahoe County data to guide our decision

### OPTIONS

#### Decision to start remote

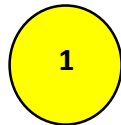
After the evening data update on August 5, 2020 a decision will be made and communicated the following morning based on the identified metrics as to how the school year will start

#### Decision to move to remote

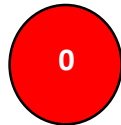
Changes in the virus will be monitored daily, but must present a sustained change prior to the decision to change status. When determined you will receive official communication from the district.



GOOD - Data demonstrates the virus is under control, move forward



CAUTION - Data demonstrates there is a concerning trend, monitor closely and be prepared to react



POOR - Data demonstrates significant community spread, uncontrolled do not move forward until trend is downgraded

**<4 Sustained (7 days)**

Remote

**=>4 Sustained (7 days)**

In-person

# School Restart – Additional Implication of Remote Learning

## Questions to be Answered if School Starts Remotely

### High School Athletics

If it is “too dangerous” to have In-Person learning, how is it ok to have athletics?

Should athletics and activities also be canceled if we are remote for an extended period of time?

### Staff Pay

If we are in remote learning for an extended period, there are employees who will not be able to complete their job – they will not continue to receive a paycheck.

### Can staff use the building if we are remote?

Should staff continue to report to their site if we are remote to complete their job? Assuming there is not a stay at home order.

# School Restart – Modeling – what we see coming

## **The current state of COVID-19 in Colorado and projected course of the epidemic in the coming weeks**

**7/16/2020**

**Prepared by the Colorado COVID-19 Modeling Group**

**Colorado School of Public Health: Andrea Buchwald, Elizabeth Carlton, Debashis Ghosh, Jonathan Samet, Laura Timm, Emily Wu; University of Colorado School of Medicine: Kathryn Colborn; University of Colorado-Boulder Department of Applied Mathematics: David Bortz; University of Colorado-Denver: jimi adams; Colorado State University: Jude Bayham**

**For Contact: [Jon.Samet@CUAnschutz.edu](mailto:Jon.Samet@CUAnschutz.edu)**

[https://www.ucdenver.edu/docs/librariesprovider151/default-document-library/modeling-report-2020-07-16.pdf?sfvrsn=3922c2b9\\_2](https://www.ucdenver.edu/docs/librariesprovider151/default-document-library/modeling-report-2020-07-16.pdf?sfvrsn=3922c2b9_2)

# School Restart – Modeling – What we see coming

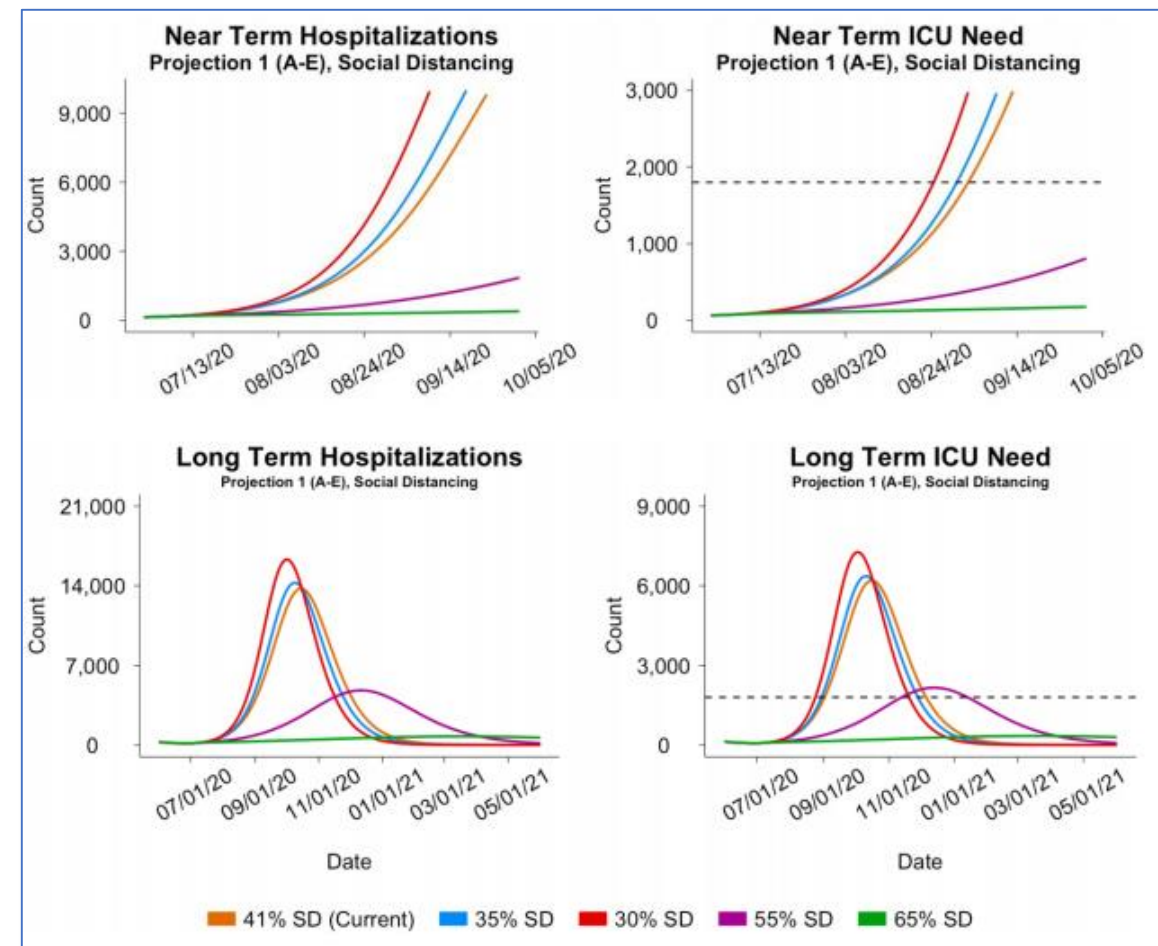
## What do we project for the coming months?

We used the age-structured SEIR model fit to the parameters described in Table 2 to project the expected number of total hospitalizations and need for critical care beds in the coming months. Projections are generated assuming we remain on the current trajectory set by the current level of social distancing, and also for a set of scenarios that model changes in social distancing starting in early July. All of these scenarios assume social distancing remains at the projected level indefinitely.

If Colorado remains on the current estimated trajectory, we expect to exceed ICU capacity for people with COVID-19 in early September (Figure 4 and Table 3). If social distancing declines below current values (to 30% or 35%), we could exceed ICU capacity in late August. Under these scenarios, without additional interventions or changes in social distancing, demand could greatly exceed hospital capacity.

If social distancing increased in recent weeks to 55% or 65%, growth is slower. Under the 55% social distancing scenario, ICU capacity is reached in November. This slow rate of growth may provide time for hospitals to prepare additional surge capacity. Under the 65% scenario, hospital capacity is not expected to be exceeded.

We will be monitoring hospitalizations closely in the days ahead to better assess the level of social distancing in early July and the implications for hospital demand in the months ahead. Additionally, we will be generating projections of the potential impact of transmission-reducing interventions implemented in the coming weeks. If policy changes are implemented in the days ahead, they may have immediate effects on the acquisition of new infections. However, it will take several weeks to see impacts on hospital demands as hospitalizations today are due, on average, to transmission events occurring two weeks prior.



Coloradoans must take all steps necessary to stop the virus so we can have school. If not, cases will continue to increase to a peak in September/October. If that occurs, our metrics will cause us to be remote.

4.  
Cherry Creek Schools  
Multiple Overlapping Safety Strategies

<https://www.cherrycreekschools.org/PlanningForward>



## HEALTHY ENVIRONMENTS

Use physical barriers when possible to prevent spread

Decreasing congestion in entrances, hallways, and other common spaces

- Use separate entrances when available

Staggered arrival, departure, meal and recess times

Cleaning and disinfecting high-touch surfaces

Maximizing ventilation



- No visitors to classrooms
- Symptom screening for staff and students
- Free COVID testing every two weeks for all staff (regardless of symptoms) – On a rotating schedule to have staff members from multiple schools tested daily
- Scheduled hand washing / hand sanitizer readily available
- Ventilation – increase fresh air exchange by 25% and utilize MERV 13 filters
- No locker use – all personal materials are carried with the student

## PHYSICAL DISTANCING

Distancing applies to middle and high school settings, and adult staff

- 6-foot spacing preferred, 3-foot acceptable in context of a comprehensive strategy
- Greatest emphasis on spacing for adult staff and older children

Class size and cohort guidance varies by phase and age



- Physical distancing to the greatest extent possible in alignment with CDPHE standards
- MS & HS – full physical distancing
- Minimizing interaction / overlapping of student groups
- 100% online school allowing choice for students and staff and minimizing number of students physically in person

## FACE COVERINGS

In compliance with applicable state and local face covering orders

Require for all staff while on site, except where medically contraindicated

- Temporary utilization of transparent alternatives for specific learning needs

Require for all students 11+ while on site, except where medically contraindicated

- Encouraged for 10 and younger
- No masks while sleeping
- Students should be able to remove own masks



## CLASS SIZES AND COHORTING

Remote learning during “Stay at Home”

In person learning may resume during “Safer at Home” and “Protect Our Neighbors”

K-8; Class size not limited, number of adults limited

HS; Class size limited by total people (students + adults) and spacing

Cohorting recommended regardless of phase; “Protect Our Neighbors” partner cohorts are allowed



- Requiring masks for all students and staff regardless of a State mandate
  - Student masks will be managed by staff in a developmentally appropriate manner.
  - Students who make the conscious choice to not wear a mask will 1) receive information regarding the requirement 2) receive an official warning 3) be transferred to 100% online.
  - Staff who make the conscious choice to not wear a mask will 1) receive information regarding the requirement 2) receive an official warning 3) will be placed on unpaid leave.
- 
- Cohorting: Class, Grade, Group, School
  - 100% online school allowing choice for students and staff and minimizing number of students physically in person
  - Limit physical interaction through limited passing periods

## 5. Specific Planning by School Level

# School Restart – Updated Planning

Cherry Creek has been working collaboratively with teachers, classified staff, parents, students, administrators and experts on creating safe school options since April 2020. We created and updated options based on new thinking and science through the summer.



CDE & CDPHE released their guidance late in the process – July 21, 2020



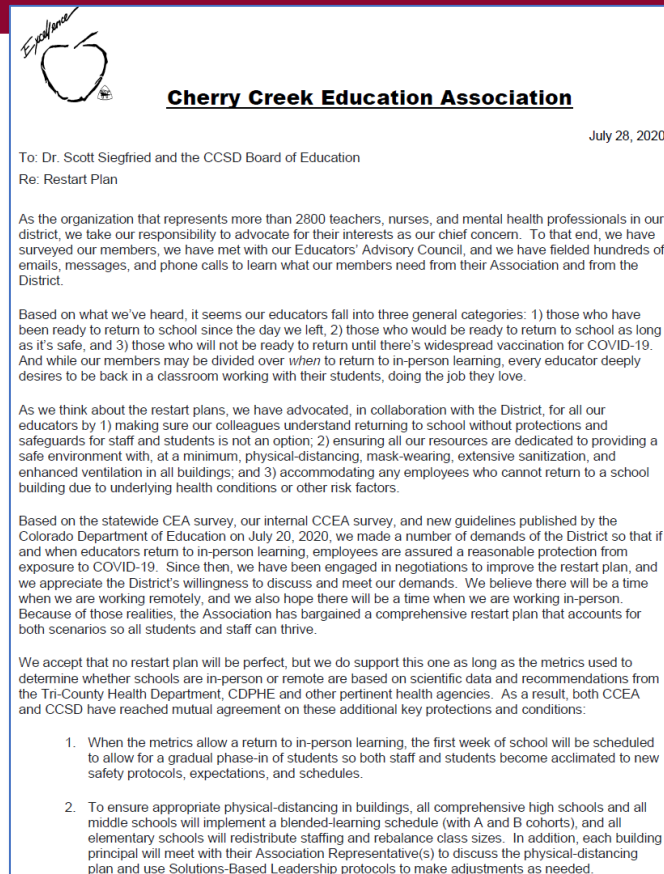
We immediately engaged with our teachers and classified staff to ensure our plans aligned to the new guidance provided by CDE & CDPHE (7/24-7/28)



Updated plans to align to safe school strategies (7/29/2020)

# School Restart – Collaboration with our Teachers

Based on negotiations and updates to current planning, the Cherry Creek Education Association (CCEA) supports the entire, comprehensive model.



We recognize over the last week, the District Leadership Team and other administrators have been working tirelessly to craft solutions that meet our demands. The restart plan, which includes three (3) major components—K-12 full-time online learning, physically-distanced in-person learning, and meaningful remote learning—was negotiated in good faith with the safety of all staff and students at the forefront of the discussion. As a result, we ask our members to support the restart plan as outlined by the COVID-19 Related Matters and Working Conditions Memorandum of Understanding and other guidelines provided by Dr. Siegfried and his leadership team.

We have a shared interest in finding a safe way to return to in-person learning. While it may be some time before we get back to normal, we can and should develop a plan that allows for the possibility to be in our schools again. As the COVID-19 pandemic continues, we also commit to represent and advocate our members' needs and interests based on the changing environment.

Sincerely,

CCEA Executive Board:

Kasey Ellis, President  
Carlye Holladay, Vice President  
Jennie Campbell, Secretary  
Robin Balogh, Area Director  
Sena Black, Area Director

Kelcie DeBow, Area Director  
Brent Harris, Area Director  
Ian LaFarge, Area Director  
Kelly Osuna, Area Director  
Matthew Pedregon, Area Director

Rachel Ravin-Whetzel, Area Director  
Carol Smith, Area Director  
Lynette Snyder, Area Director  
Mary Szablya, Area Director  
Christine Tokarchik, Area Director

on school campuses, and a clear policy to  
ators should also receive medical-grade  
g supplies will be provided to all staff. Staff,  
e given time to sanitize classrooms and  
available to staff at no cost. In addition,  
related costs for its members at least  
not see out-of-pocket expenses.

teachers and SSPs from the Association,  
oth online and in-person learning to meet  
ents, ELL, G/T). The District has also  
e needs of our students of color.

and CCSD representatives, will meet to  
in the event of remote learning.

y receive non-probationary status  
reassigned to a position in the online  
022 school year. Any non-probationary  
but finds another job posting for which they  
sition for the 2020-2021 school year and be

rsed to coaches and sponsors on a  
activity and only at its conclusion. Any  
virtually will continue to be paid but on a

# School Restart – Preparation Time

## **Preparation Time and Opportunity**

### **Time**

- Teachers and administrators were provided with five (5) additional CARES funded planning days to use at their discretion to prepare for both In-Person and Remote instruction.
- Teachers have an additional four (4) pre-scheduled planning days to prepare for both In-Person and Remote instruction (August 11-14, 2020).

### **Opportunity**

- The district created and released online modules to support teachers in developing skills & strategies to support remote learning.
- The district created online modules to support teachers with In-Person, Blended and Remote Learning.

# School Restart – Phase-in week

## Phase-in week (August 17-21, 2020)

### Rationale

- Provide time for new students to a school (K, 1<sup>st</sup>, 6<sup>th</sup>, 9<sup>th</sup> grades) the opportunity to spend time at at the school learning the routines and practices at that school to support success.
- Provide opportunities for all students to be at school with limited total attendance to learn and practice new routines and practices prior to a full start.
- Provide opportunities for staff and students to meet and begin to develop relationships prior to the full start of school.
- This schedule provides teachers with additional days of planning to prepare for learning.



# School Restart – Phase-in week

## Phase-in week (August 17-21, 2020)

### Schedule Overview

- Based on the assigned schedule, students will attend school and move through the adjusted schedule.

#### Example Schedule:

Monday	5 <sup>th</sup> grade
Tuesday	4 <sup>th</sup> grade
Wednesday	3 <sup>rd</sup> grade
Thursday	2 <sup>nd</sup> grade
Friday	K-1 <sup>st</sup> grade

Similar patterns for  
middle and high school

Specific schedules will  
be sent by your school



5a.  
K-5 100% Online (Online Elementary & Elevation)

# K-5 100% Online (Elevation)

Students registered for  
100% online school

TOTAL	9421
Elementary	3912
Middle	2321
High	2778

# K-5 100% Online

## The online option allows for:

- Students and parents can make the decision to not be in person
- Teachers to apply to teach in the online school
- Increased spacing and physical distancing opportunities at all schools

## Online students and teachers:

- Will not be impacted by decisions of “In-Person” or “Remote” for other students
- Will utilize a different and specific learning system

# School Restart – Safety Strategies

## 5b. Elementary School

# Elementary School

K - 5th



- Continue remote instruction if best for your community or;
- Up to four adults per classroom per day. So, only 4 teachers should rotate into one specific classroom per day.
- Students in grades K-5 do not need to meet the 6-foot distance in classrooms or other locations.
- Normal class sizes may occur.

The elementary model along with the multiple overlapping safety strategies adheres to 100% of health department guidance for Elementary schools



## Model

- School = 5 days per week, normal school schedule

## Operational Specifics

- Smaller class size – reduced and rebalanced depending upon the number of students choosing online
- Strict cohorting – Instructional class assignment will be maintained through the day. Fewer than 4 teachers will interact with each class daily
- Limit physical interaction through limited passing periods – passing periods to go specials and lunch to be staggered
- Social distancing to the greatest extent possible in classrooms and other areas of the school
- Scheduled hand washing
- Social distanced for lunch in cafeteria (with extended spaces, e.g. gym)
- Outdoor instruction/time is encouraged through the day
- Activities occur remotely

## **Current Practice / Evidence:**

Cherry Creek extended childcare services (ECS) has been operating throughout July  
In our elementary schools

- Students have not had difficulty with masks
- Hygiene routines have been adopted by students and staff
- No infections have been reported

# School Restart – Safety Strategies

## 5c. Middle School

# Middle School

6th - 8th



- Continue remote instruction if best for your community or;
- Up to three adults per classroom per day. So, only 3 teachers should rotate into one specific classroom per day.
- A firm student gathering number is not given because school classroom sizes differ between and among districts. Local schools should determine the appropriate gathering size while working towards 6-foot distance in a classroom. It is understood some adjustments for each school will need to occur.

The middle school model along with the multiple overlapping safety strategies adheres to 100% of health department guidance for middle schools



## Model

- School = Blended schedule; per week - 2 days in-person at school, 3 days at home self-directed

## Operational Specifics

- Minimal class size – Class size reduced by 50% daily to maximize physical distancing
- Cohorting – by group A or B
- Limit physical interaction through limited passing periods with no lockers
- Greatest amount of social distancing to align with CDPHE guidance
- Social distancing at lunch
- Activities after school will occur remotely to the greatest extent possible
- Athletics are canceled
- Outdoor instruction/time is encouraged through the day
- Teachers are required to plan for both In-Person students and Self-Directed students
- Office hours and additional help will be managed virtually



# Middle School

## Schedule:

- Students will be split into A or B days by their school - Our best effort will be made to align middle and high school families into A/B cohorts
- Days attending In-Person
  - A-Days - Tuesday & Wednesday
  - B-Days - Thursday & Friday
- Schools will return to their original daily schedules

	Monday	Tuesday	Wednesday	Thursday	Friday
A Group	At Home	At School	At School	At Home	At Home
B Group	At Home	At Home	At Home	At School	At School

# School Restart – Safety Strategies

## 5d. High School

# High School

9th - 12th



- Continue remote instruction if best for your community or;
- A firm student gathering number is not given because school classroom sizes differ between and among districts. Schools should determine the appropriate gathering size while working towards 6-foot distance in a classroom. It is understood some adjustments for each school will need to occur.

The high school model along with the multiple overlapping safety strategies adheres to 100% of health department guidance for high schools



## Model

- School = Blended schedule; per week - 2 days in-person at school, 3 days at home self-directed

## Operational Specifics

- Minimal class size – Class size reduced by 50% daily to maximize physical distancing
- Cohorting – by group A or B
- Limit physical interaction through limited passing periods with no lockers
- Greatest amount of social distancing to align with CDPHE guidance
- Social distancing at lunch, students may leave campus for lunch
- Activities occur remotely to the greatest extent possible
- Athletics are a separate cohort
- In-person office hours and student “off” periods at school
- Outdoor instruction/time is encouraged through the day
- Teachers are required to plan for both In-Person students and Self-Directed students

# High School

## Schedule:

- Students will be split into A or B days by their school
- Days attending In-Person
  - A-Days - Tuesday & Wednesday
  - B-Days - Thursday & Friday
- Schools will operate classes in alignment with prior schedules
  - Block or 8-period day

	Monday	Tuesday	Wednesday	Thursday	Friday
A Group	At Home	At School	At School	At Home	At Home
B Group	At Home	At Home	At Home	At School	At School



## Families made choices on now outdated information

- Enrollment window will be re-opened (100% online vs. In-Person)
- Wednesday, July 29 – Monday, August 3
- Process to change
  - Contact your school's main office

## 6. If We Start or Move to Remote Learning

# School Restart – Remote Learning

If / when we move from In-Person to Remote – What will it look like?

Move to remote by:

- Class
- Grade Level
- School
- District

Possibilities to consider:

- Start remote?
- Start In-Person?
- Move to remote?
- Return to In-Person?

# School Restart – Remote Learning

	Elem Grades K-2	Elem Grades 3-5	Middle school 6-8 30 minute lunch included	High School 9-12 30 minute lunch included
Monday	8:00 a.m. - 11:00 a.m.	12:00 p.m.- 3:00 p.m.	9:00 a.m. - 1:00 p.m.	10:00 a.m. - 2:00 p.m.
Tuesday	8:00 a.m. - 11:00 a.m.	12:00 p.m. - 3:00 p.m.	9:00 a.m. - 1:00 p.m.	10:00 a.m. - 2:00 p.m.
Wednesday	8:00 a.m. - 11:00 a.m.	12:00 p.m. - 3:00 p.m.	9:00 a.m. - 1:00 p.m.	10:00 a.m. - 2:00 p.m.
Thursday	8:00 a.m. - 11:00 a.m.	12:00 p.m. - 3:00 p.m.	9:00 a.m. - 1:00 p.m.	10:00 a.m. - 2:00 p.m.
Friday	8:00 a.m. - 11:00 a.m.	12:00 p.m. - 3:00 p.m.	9:00 a.m. - 1:00 p.m.	10:00 a.m. - 2:00 p.m.

## Students:

- Grades will be given.
- Attendance will be taken.
- Students will be expected to engage daily.

## CCSD Consistency:

- Learning Management System
  - Schoology
    - Technology Tools within the Learning Management System
      - SeeSaw
      - Google Suites
      - Microsoft Teams

### ◦ Elementary School

Students will receive instruction in up to four content areas a day with specials offerings that are staggered throughout the week.

### ◦ Middle School

Students will maintain an A day - B day schedule with core content and electives offered each day. Half will be on the A day and the other half on the B day.

### ◦ High School

Students will transition to an A day - B day schedule. They will receive instruction in four periods a day as opposed to the two-period day offered for In-Person Learning. Half of their classes will be on the A day and the other half on the B day.



## Transitioning to Remote Learning

Whether for a temporary move to remote (e.g. 14 days due to a case) or a long-term move dictated by our decision-making metrics:

- Teachers will have two (2) working days to transition plans for remote after the decision is communicated
- Remote learning will be provided by the students' assigned classroom teacher and will follow their predetermined syllabus

We will not transition to remote learning for a dismissal less than a week and will not require teachers to serve both In-Person students and Remote. Example for a short term transition to remote learning – an athlete is required to quarantine for 14 days due to an infection on their team but does not impact their teachers – students can continue to access and complete work posted on Schoology but will not receive remote instruction.

## 7. Special Populations

# School Restart – Special Populations

## Updates posted online

English Language Learners

Gifted and Talented

Students with an IEP

<https://www.cherrycreekschools.org/PlanningForward>

## 8. CCSD Alignment with Health Guidance

	<b>Masks and Other Protective Equipment</b>
	<b>Cohort Grouping</b>
	<b>Physical Distancing</b>
	<b>Hand washing and Sanitizing</b>
	<b>Temperature and Symptom Screening</b>
	<b>Building Entry/Exit</b>
	<b>Ventilation</b>
	<b>Cleaning Procedures</b>
	<b>Testing</b>

## MDPH

Required K-12

Yes

Greater by age

Yes

Yes

Stagger / space

Increase fresh air

Between cohorts

Process available

## CDPHE/CDE

Required 6-12, Optional K-5

Yes

Greater by age

Yes

Yes

Stagger / space

Increase fresh air

Between cohorts

Process available

## CCSD

Required K-12

Yes

Yes – per level

Yes

Yes

Yes

Yes

Yes

Free for staff



# Colorado Education Association - Expectations for In-Person Learning




The Colorado Education Association believes that in-person learning is essential for students and educators and looks forward to returning to school in person this fall as long as districts ensure that the safety and health of all stakeholders are in place.

To ensure our schools are safe to learn this fall, the following expectations must be met:

1. Employees voice and safety must drive decision making through honoring bargaining rights or a vote of approval from all employees.
2. Safety protections, protocols, and precautions must be provided by our school districts for all students and staff.
3. Our community must be provided with transparency and data that has driven the decision making process.
4. Equity for students, staff, and families must always be provided, no matter where the learning is occurring.



*Dedicated to Excellence*  
Cherry Creek Schools

- 
1. Collaboration since April; negotiated responses to opening requirements; agreement to restart.
  2. All health department guidance is met or exceeded.
  3. Data driven decision making metrics – transparent and based on science and facts.
  4. Technology has been purchased for all students who qualify for free & reduced lunch.

# *Cherry Creek* PLANNING FORWARD

---

Conclusions

---

Maintaining *the*  
Tradition *of*  
Excellence



Cherry Creek **Future Forward** 

# Conclusions

## Decision for In-Person vs. Remote Learning

- ✓ Objective decision-making process
- ✓ Grounded in science, transparent and clearly identified decision making process

## Health Department Recommendations for In-Person Learning

- ✓ All recommendations are met or exceeded by level through the implementation of multiple overlapping safety strategies
- ✓ School level models account for different health department recommendations

## Collaboration with Staff

- ✓ The teachers' association supports the action taken to meet all In-Person health department guidance and endorses a return to school
- ✓ Teachers had the option to apply for 100% online school





# *Cherry Creek* **PLANNING FORWARD**

---

Recommendation for the  
restart of school

---

Maintaining *the*  
Tradition *of*  
Excellence



Cherry Creek **Future Forward** 

# Recommendation

August 5, 2020

Final determination of how school will start

In-Person or Remote?

If In-Person

August 17-21:

Phase-in week at all levels

August 24:

Full time school begins for all students as described by level

If Remote

August 17:

School begins remotely for all students

