

Laredo Middle School STUDENT SUPPLY LIST 2024-2025

Links: The links below provide examples and are not necessarily the best deals.

Lockers: Most LMS students choose to carry their belongings in their backpack rather than use a locker. Students may access their lockers before school, before and after lunch, and after school. Lockers will be assigned in August to students wishing to use one.

GENERAL SUPPLIES



- Personal earbuds/headphones
- Backpack
- Water bottle [fill stations available]

- Pencil bag or organized backpack pocket
- 24+ Pencils (mechanical or regular)
- 24+ Pens (black, blue)
- Highlighters
- Loose leaf paper
- Dry erase markers (4)
- Metric ruler
- Scissors
- Glue sticks (optional)

- Option 1:** 6 individual folders
*Preferred setup: **Red** - math, **Blue** - science, **Yellow** - lang arts, **Green** - social studies, **Purple** - elective #1, **Orange** - elective #2*
- Option 2:** 3-ring binder (2-inch max.)
Add 6 tabbed dividers or folders for each class
- Colored pencils (optional)
- Markers (optional)
- Planner (optional)

COMMUNITY SUPPLIES



- Colored pencils (1+ box to Advisor)
- Markers (1+ box to Advisor)
- Pencils (12+ to Advisor)
- Tissues (3+ boxes; 1 to Advisor, 1 to elec. teacher #1, 1 to elec. teacher #2)
- Glue sticks (2+ sticks to Advisor)

PROVIDED



- ✓ CCSD laptops available in classrooms
- ✓ Student ID provided on picture day

[Laredo Lions are to have their IDs with them during the school day.]

ELECTIVES



- Band: 1-inch binder
- Health & Fitness: notebook
- Orchestra: 1-inch binder
- Spanish: plastic folder with prongs
- Food Sciences: composition book with plastic cover

LANGUAGE ARTS



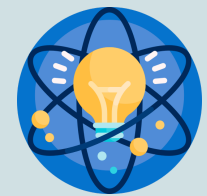
- Composition notebook
- Loose leaf paper

SOCIAL STUDIES



- 6th Grade: folders with prongs (4)
- 7/8th Grade: folder (green folder listed under General Supplies)

SCIENCE



- 6th Grade: folders with prongs (4)
- 7/8th Grade: single subject spiral notebook (8.5 x 11", plastic cover preferred)

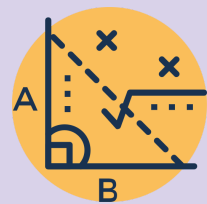


CELL PHONES



Once students enter the building, their cell phones are to be silenced/turned off. They may be kept in the student's backpack throughout the day. Students may use their cell phones outside before/after school and during lunch/recess. To read our **LMS Cell Phone Guidelines and Agreement**, follow the link or scan the QR code above.

MATH



- Single subject spiral notebook
- Scientific calculator (not a cell phone)
 - Ex: **TI-30IIS** or **TI-30XS** (used in 6-9th gr.)
 - **Algebra students:** TI-84 Graphing Calculator encouraged (also used in HS)