

School Health Services Program – Cherry Creek School District

The School Health Services (SHS) Program supports participating school districts by administering reimbursement through federal matching funds for the health services provided to public school students enrolled in Health First Colorado (Colorado’s Medicaid Program)

60

School districts participating in CO’s SHS Program

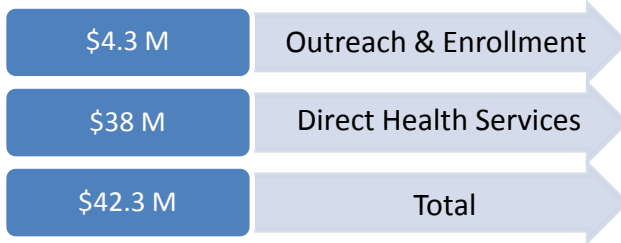


About **84%** of total student population in CO

Types of services reimbursed:

Physician · Nursing · Personal Care · Psychology, Counseling and Social Work · Orientation and Mobility · Speech Language and Hearing · Occupational Therapy · Physical Therapy · Specialized Transportation

SHS Program Reimbursement Dollars for Fiscal Year 2016-17 for Colorado School Districts



Top Three State Spending Priorities



Increase Mental Health Services



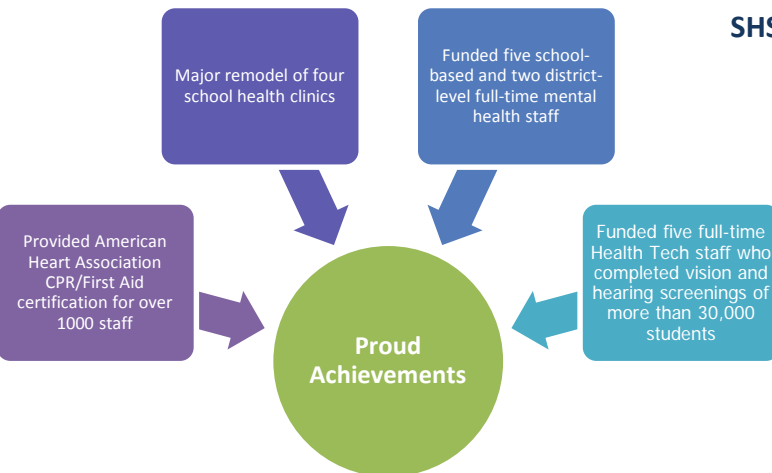
Increase Nursing Services



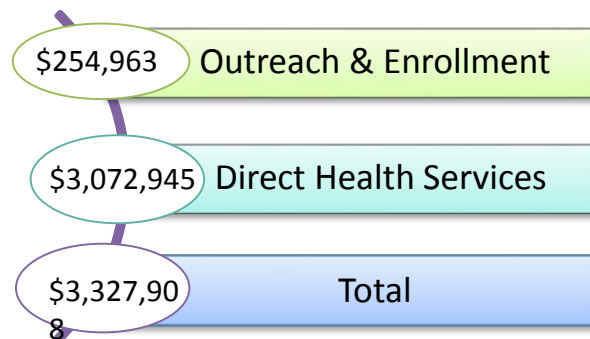
Provide Vouchers for Dental, Vision, Hearing, or Mental Health

HOW DOES CHERRY CREEK SCHOOL DISTRICT USE THEIR SHS PROGRAM MONEY?

Local Services Plan (LSP): Participating districts are required to develop an LSP based on community input to determine priorities and how funds will be allocated to enhance or expand health services to all students in the school district



SHS Program Reimbursement Dollars for Fiscal Year 2016-17 for Cherry Creek School District



16.33 Full Time Staff Supported by the SHS Program



2,772 Pieces of Health Related Equipment & Supplies



\$367,176 on Mental, Social & Emotional Health